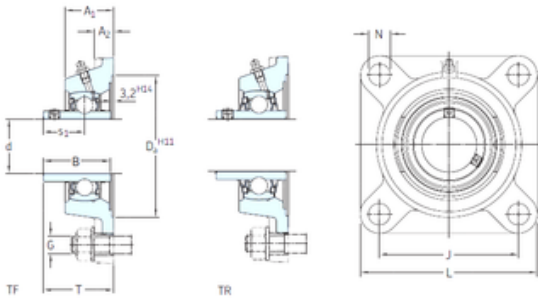




# BROWNING BEARING COMPANY

## skf fyj 45 tf bearing

Bearing No. fyj 45 tf



fyj 45 tf Bearing 2D drawings and 3D CAD models

Bore Diameter	45 mm
d	45 mm
Da	119,1 mm
s1	30,2 mm
A1	38 mm
B	49,2 mm
G	14 mm
J	105 mm
L	137 mm
N	16 mm
T	52,2 mm
A2	18 mm
Weight	2,45 Kg
Basic dynamic load rating (C)	33,2 kN
Basic static load rating (C0)	21,6 kN
Fatigue load limit (Pu)	0,915
Category	Mounted Units & Inserts
Inventory	0.0
Manufacturer Name	SKF
Minimum Buy Quantity	N/A
Weight / Kilogram	2.258
EAN	7316571090122
Product Group	M06110
Housing material	Cast iron
D <sub>a</sub>	119.1 mm
D <sub>b1</sub>	107 mm



## BROWNING BEARING COMPANY

$D_{b2}$	108 mm
A	38 mm
$A_1$	16 mm
$A_3$	3.2 mm
$s_1$	30.2 mm
$R_G$	1/4-28 UNF
$R_1$	22 mm
$D_N$	6.5 mm
$SW_N$	7 mm
$G_N$	1/4-28 SAE-LT
$J_6$	123 mm
$J_7$	33.5 mm
$N_4$	4 mm
Basic dynamic load rating C	33.2 kN
Basic static load rating $C_0$	21.6 kN
Fatigue load limit $P_u$	0.915 kN
Limiting speed	4300 r/min
Mass bearing unit	2.05 kg
Thread grub screw $G_2$	M8x1
Hexagonal key size for grub screw N	4 mm
Recommended tightening torque for grub screw	6.5 N · m
Recommended diameter for attachment bolts, mm G	14 mm
Recommended diameter for attachment bolts, inch G	0.5625 in